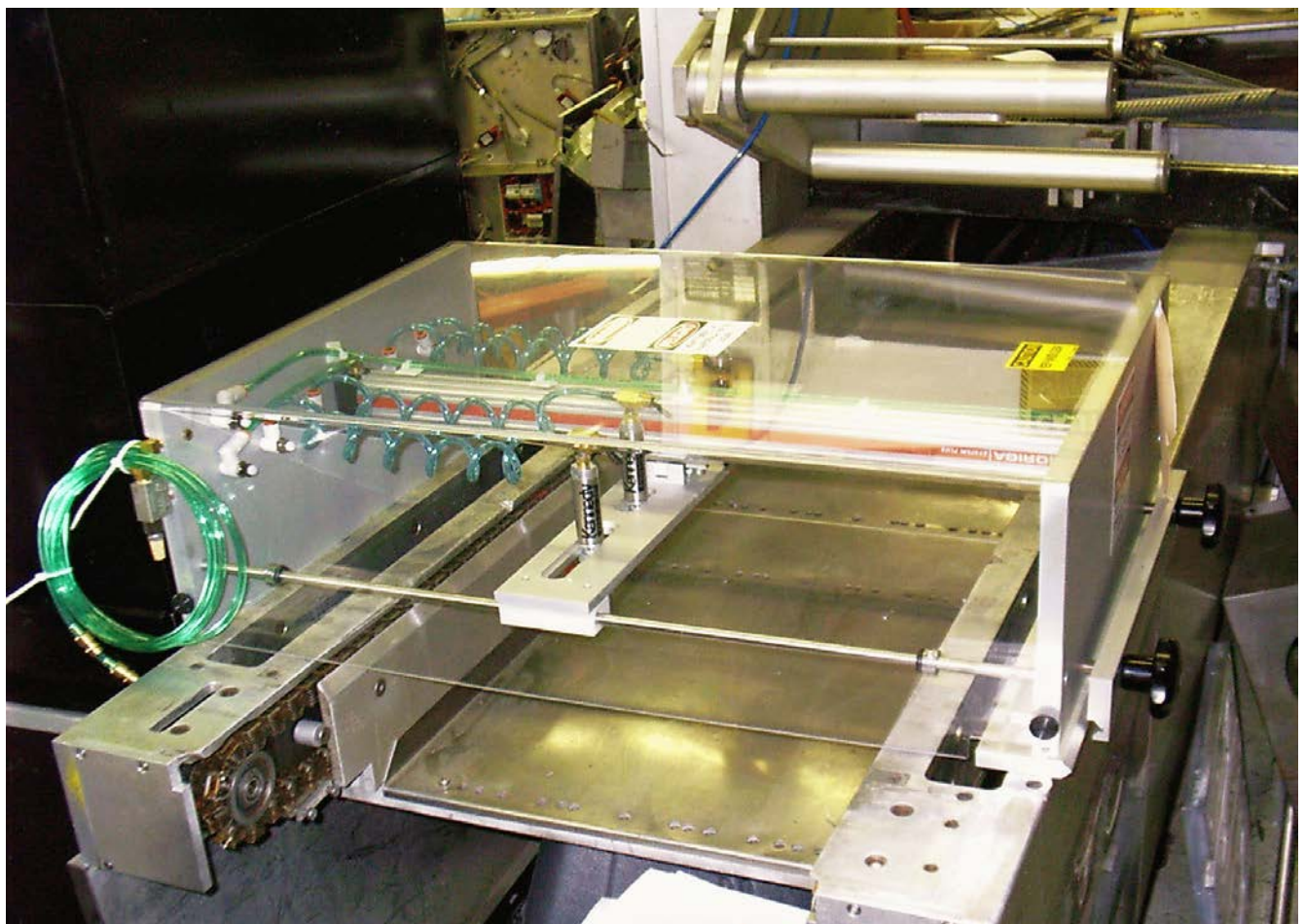


ROD TYPE CROSSCUT SYSTEM **FOR MULTIPLE CUTS**

If you are looking for a reliable, easy, and cost efficient flying crosscut system, it is here.

The Kennedy crosscut system can be made as a single cut or a multiple cut configuration, either way you will find this system to be what you have been looking for.

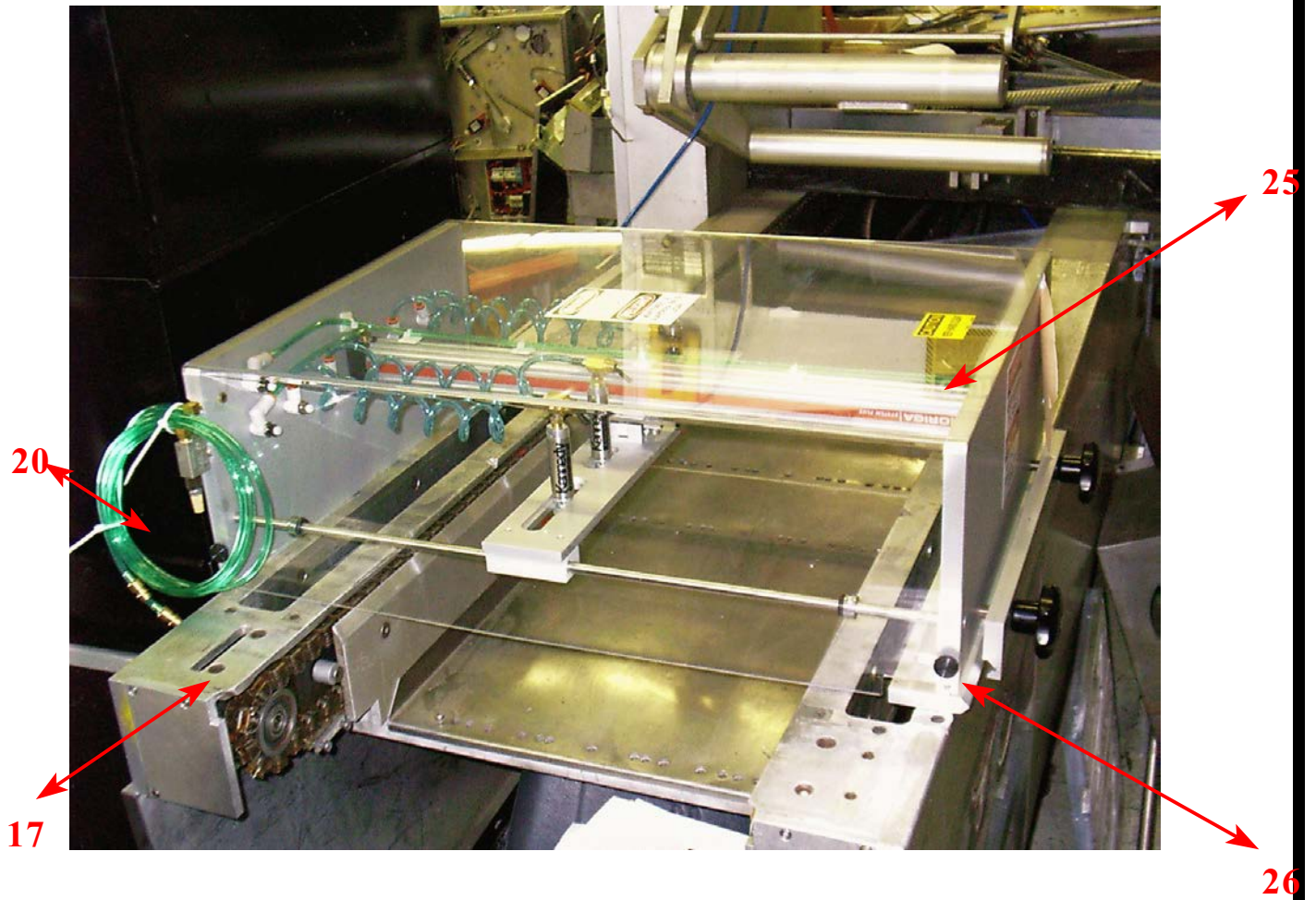
This cutting system has been designed with the maintenance man in mind. It has as few moving parts as possible. Most OEM cutting systems we felt were over engineered with many moving parts, which equates to high maintenance and parts cost.



Simplicity with reliability is what this cutting system is designed for.

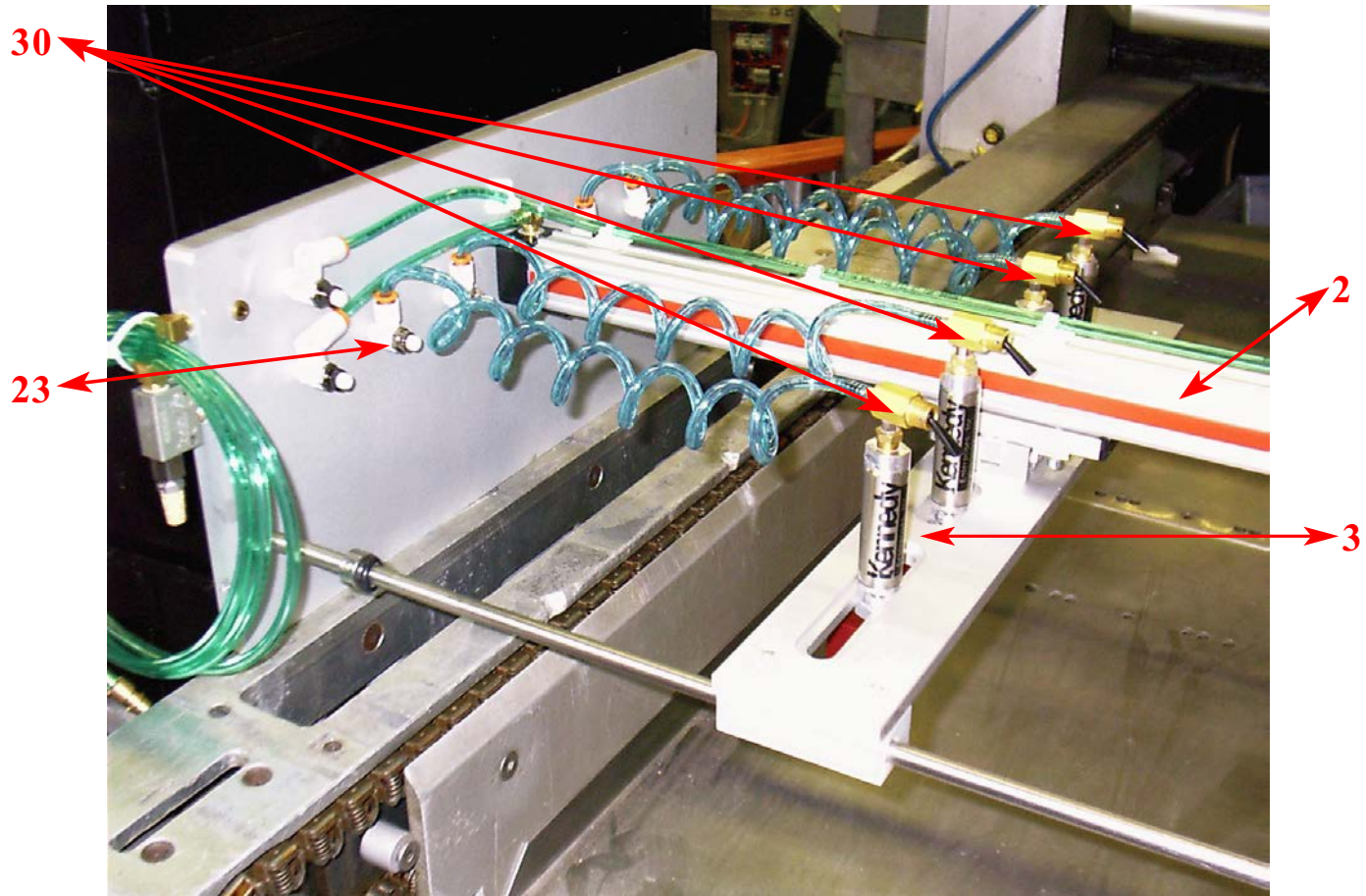
If you would like more information on this system just ask your salesman or call 800-228-0072 we will make sure you get our parts catalog and a drawing to help you give us the needed information to build your new

KENNEDY CROSSCUT SYSTEM

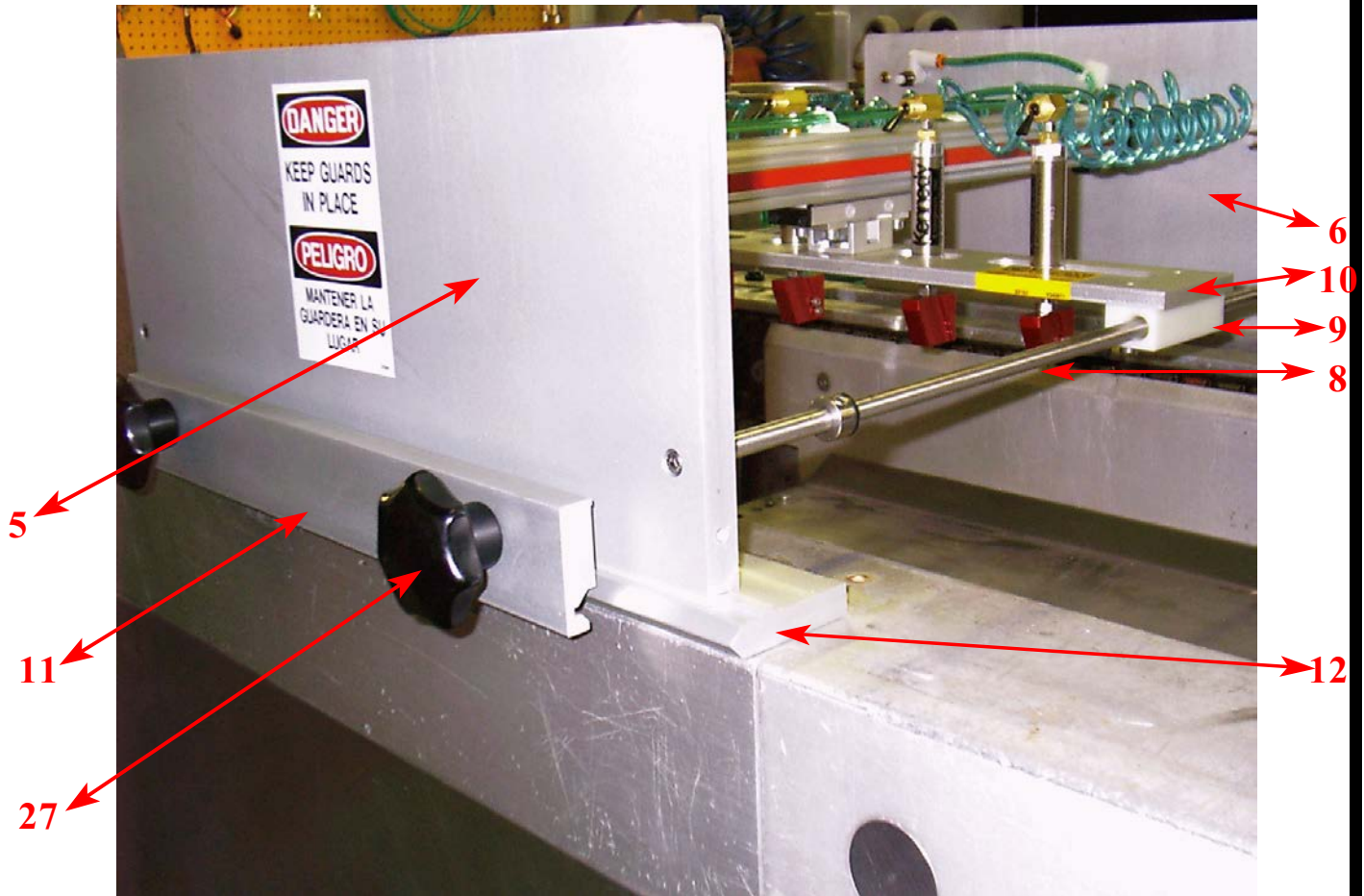


<u>LOCATION #</u>	<u>PART#</u>	<u>QTY.</u>	<u>DESCRIPTION</u>
-------------------	--------------	-------------	--------------------

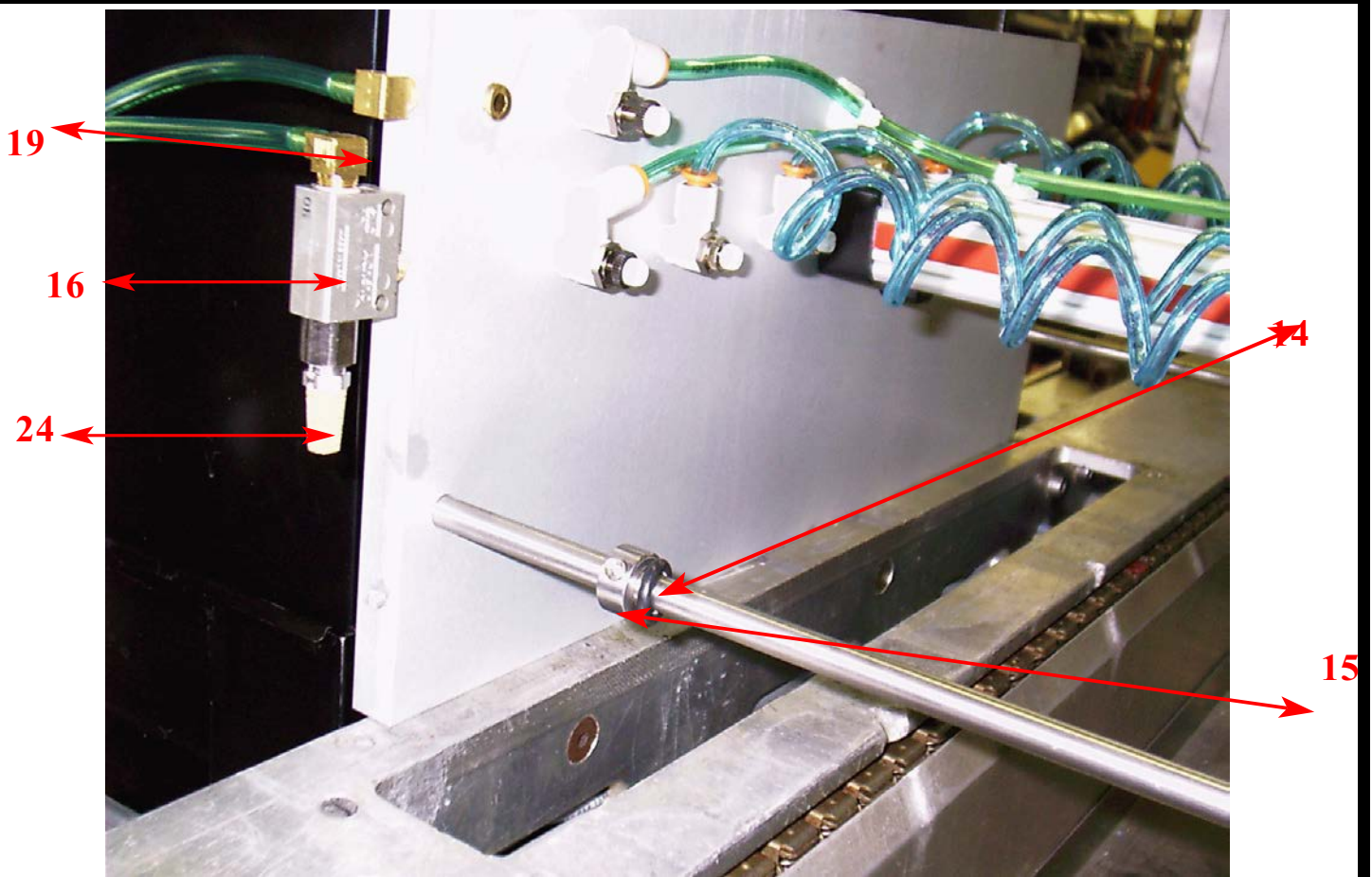
1	AS-6000**	1	ROD TYPE CROSS CUT SYSTEM
17	AS-6011	2	BRASS QUICK CONNECTOR
20	AS-6016	6'	POLY TUBING 1/4" O.D.
25	AS-6044	1	SAFETY SHIELD
26	AS-6045	4	SAFETY COVER HOLD DOWN KNOBS



<u>LOCATION #</u>	<u>PART#</u>	<u>QTY.</u>	<u>DESCRIPTION</u>
2	AS-6000-WW	1	ROD LESS AIR CYLINDER
3	AS-6003	1	KNIFE CYLINDER
23	AS-6032	1	METER OUT OFFSET TYPE
30	AS-6034	1	SHUT OFF VALVE
—	AS-6012	1	RIGHT ANGLE BANJO CONNECTOR



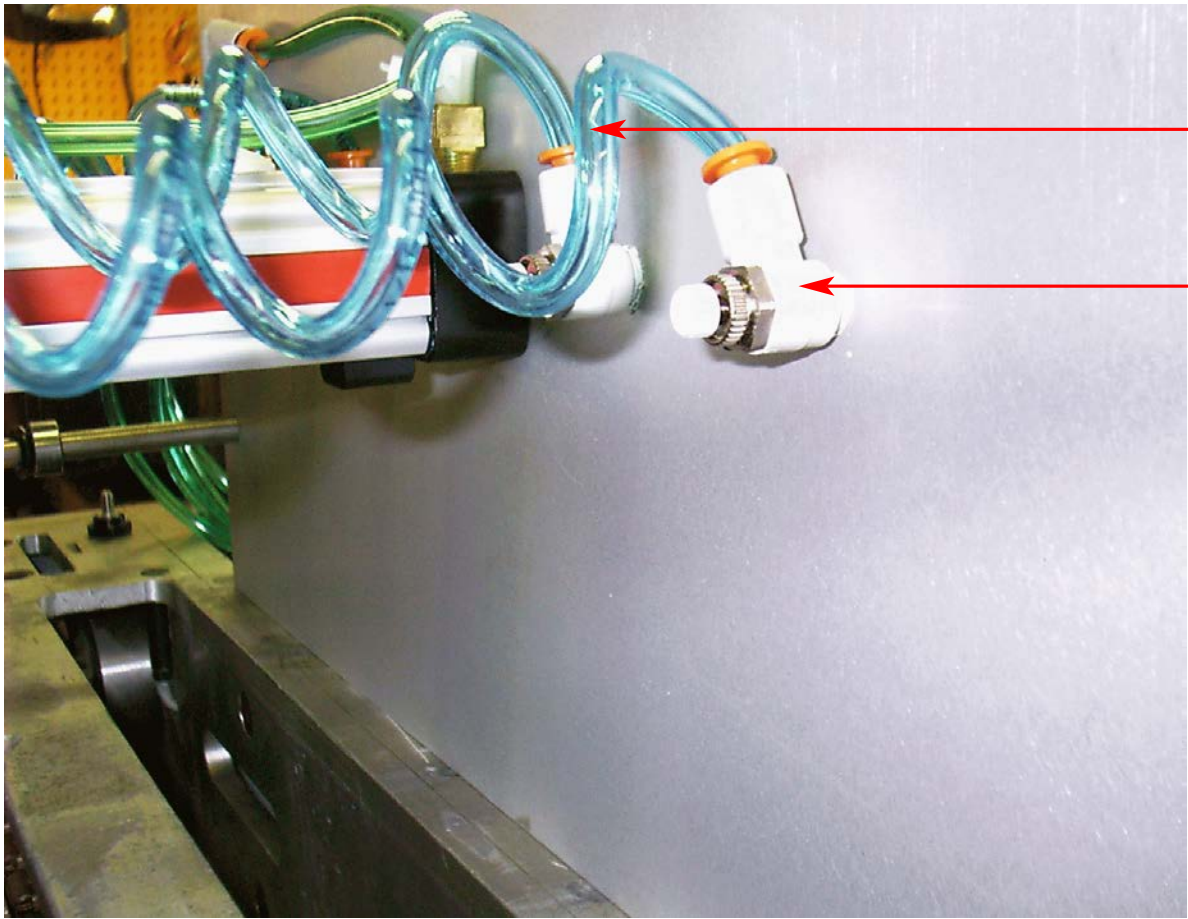
<u>LOCATION #</u>	<u>PART#</u>	<u>QTY.</u>	<u>DESCRIPTION</u>
5	AS-6035	1	SUPPORT PLATE OPERATOR SIDE
6	AS-6036	1	SUPPORT PLATE NON-OPERATOR SIDE
8	AS-6038	2	SST. SUPPORT RODS
9	AS-6039	1	BEARING BLOCK
10	AS-6040	1	CYLINDER MOUNTING BLOCK
11	AS-6041	1	TOP CLAMPING BAR
12	AS-6042	1	FRAME LOCK
27	AS-1126-1	4	STAR KNOB F/TOP CLAMPING BARS



<u>LOCATION #</u>	<u>PART#</u>	<u>QTY.</u>	<u>DESCRIPTION</u>
14	AS-6043	1	O-RING 10 X 4MM
15	AS-6462K14	1	SST. SHAFT COLLAR
16	AS-6010	1	QUICK EXHAUST VALVE
19	AS-6015	1	HOSE BARB
24	AS-1803	1	MUFFLER-BRONZE 1/8"



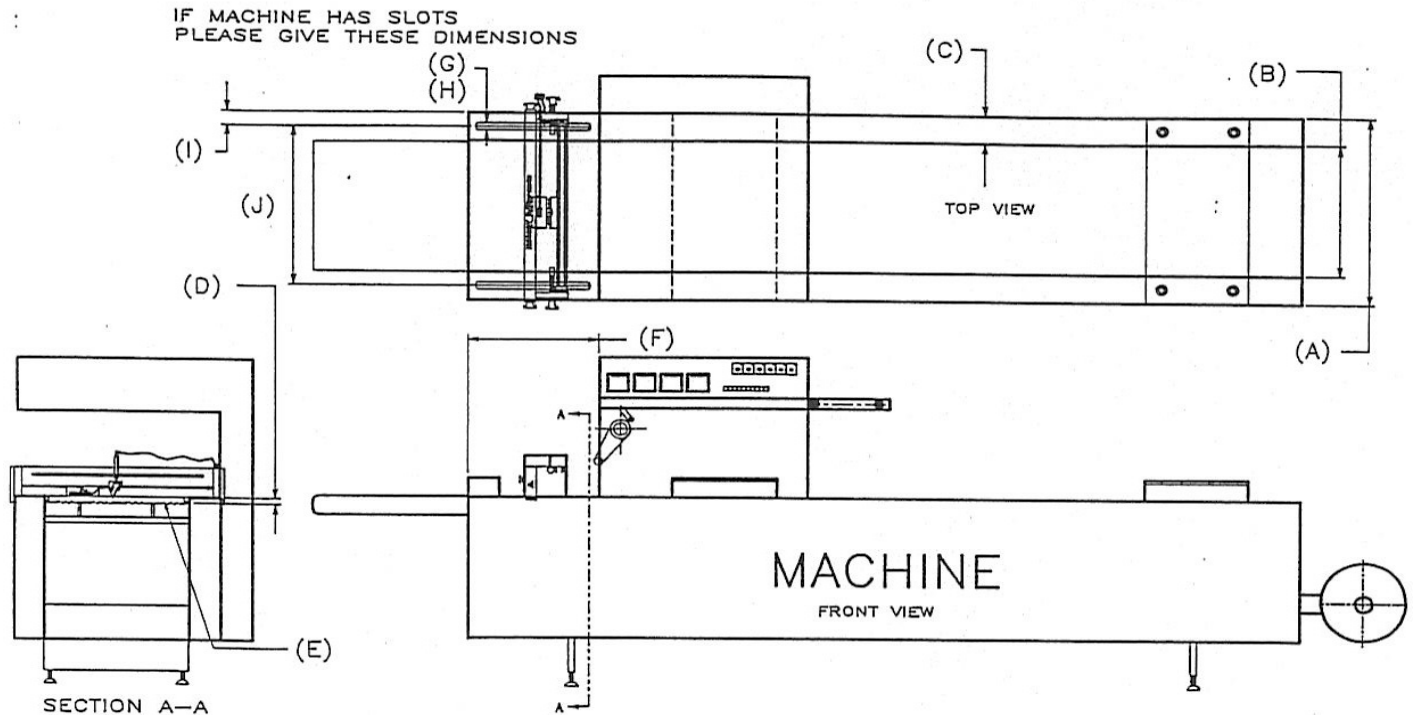
<u>LOCATION #</u>	<u>PART#</u>	<u>QTY.</u>	<u>DESCRIPTION</u>
4	AS-6004	1	KNIFE HOLDER
28	AS-6029	1	BLADE HOLDER SET SCREW
29	AS-6030	2	BLADE HOLDER S.S. S.H.C.S.
—	AS-6033	1	KNIFE BLADE



<u>LOCATION #</u>	<u>PART#</u>	<u>QTY.</u>	<u>DESCRIPTION</u>
21	AS-6019	3'	COILED TUBING 1/4" O.D.
22	AS-6031	2	METER OUT ELBOW TYPE

This drawing is for your use when ordering a Kennedy Crosscut.

KENNEDY ENTERPRISES, INC.



DIMENSION'S NEEDED FOR MANUFACTURE OF CROSSCUT

- A. MACHINE FRAME WIDTH = _____
- B. WEB WIDTH = _____
- C. DIM. OF BOTH RAILS = OPERATOR SIDE = _____
NON OPERATOR SIDE = _____
- D. DIM. FROM TOP OF RAIL TO TOP OF FILM = _____
- E. FILM WIDTH = _____
- F. DIM. FROM CONTROL PANEL TO END OF MACHINE = _____

- G. SLOT WIDTH = _____
- H. SLOT DEPTH = _____
- I. DIM. FROM RAIL TO CENTER = _____
- J. DIM. FROM CENTER TO CENTER = _____

MACHINE TYPE = _____
 MACHINE MODEL = _____
 MODEL YEAR = _____

MACHINE ADVANCE = _____

Please enter all dimensions for your respective machine. With this information we will be able to start manufacturing your cutting unit.